



Rendered in Spring Bloom Palette



Munster Parks and Recreation Briar Park Rev.1





Rendered in Spring Bloom Palette

Munster Parks and Recreation
Briar Park Rev.1



Rendered in Spring Bloom Palette



Intellectual property of GameTime, a PlayCore Company. The use of an image is an interpretation and may not reflect exact site conditions.



Rendered in Spring Bloom Palette



© PlayCore
www.gametime.com

Munster Parks and Recreation
Briar Park Rev.1



Intellectual property of GameTime, a PlayCore Company. The site shown at rendering is an interpretation and may not reflect exact site conditions.



Rendered in Spring Bloom Palette



Munster Parks and Recreation
Briar Park Rev.1



Intellectual property of GameTime, a PlayCore Company. The look and rendering is an interpretation and may not reflect exact site conditions.



Rendered in Spring Bloom Palette

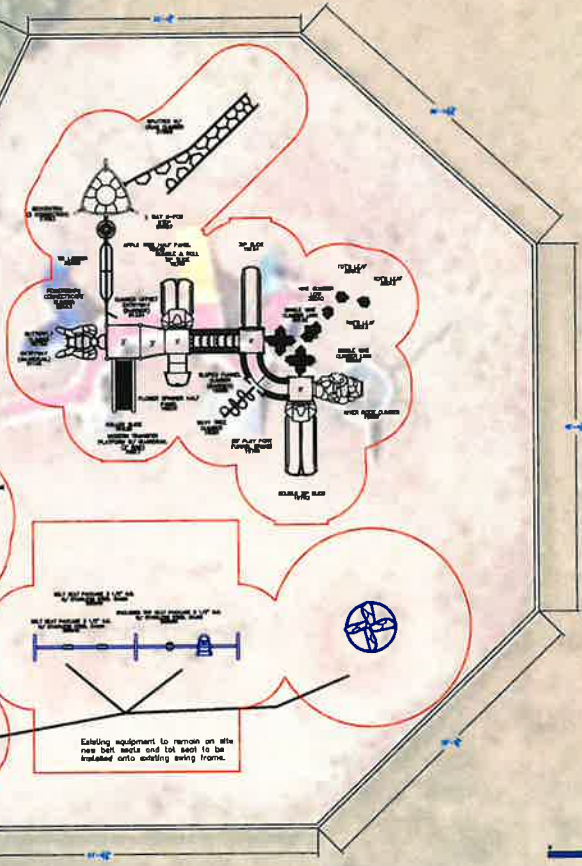


Munster Parks and Recreation
Briar Park Rev.1

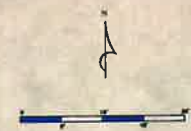


Briar Creek

Gazebo



Existing equipment to remain on site
new built seats and tool seat to be
integrated onto existing swing frame.



ISO
9001
CERTIFIED

150 PlayCore Drive SE
Fort Payne, AL 35967
www.gametime.com

Munster Parks and Recreation
Briar Park - One - Rev
Munster, IN
Representative
Sinclair Recreation

This table indicates play areas and
areas of play equipment are designed
to meet the minimum requirements of
the ADA (Americans with Disabilities
Act) and the ADA (Americans with
Disabilities Act)

Total Elevated Play Components
Total Elevated Play Components Accessible By Transfer
Total Elevated Components Accessible By Transfer
Total Accessible Ground Level Components (Stumps)
Total Elevated Types of Ground Level Components

| | | |
|----|----------|---|
| 14 | Required | 0 |
| 14 | Required | 7 |
| 14 | Required | 0 |
| 4 | Required | 3 |

This play
equipment is
recommended
for children ages
5-12

Minimum Area Required
for this equipment
Scale: 1/4" = 1'-0"

REQUIREMENTS: All equipment components
shall be placed in the use zones of all
equipment, as specified for each type of
equipment, and designed to meet the
minimum area requirements specified by the U.S.
Consumer Product Safety Commission.
All U.S. standards © 2017 www.gametime.com
Standard C0000A-0014

Project No:
ALW
Date:
07/18/2024
Drawing Name:
Munster - Briar Park - One - Rev